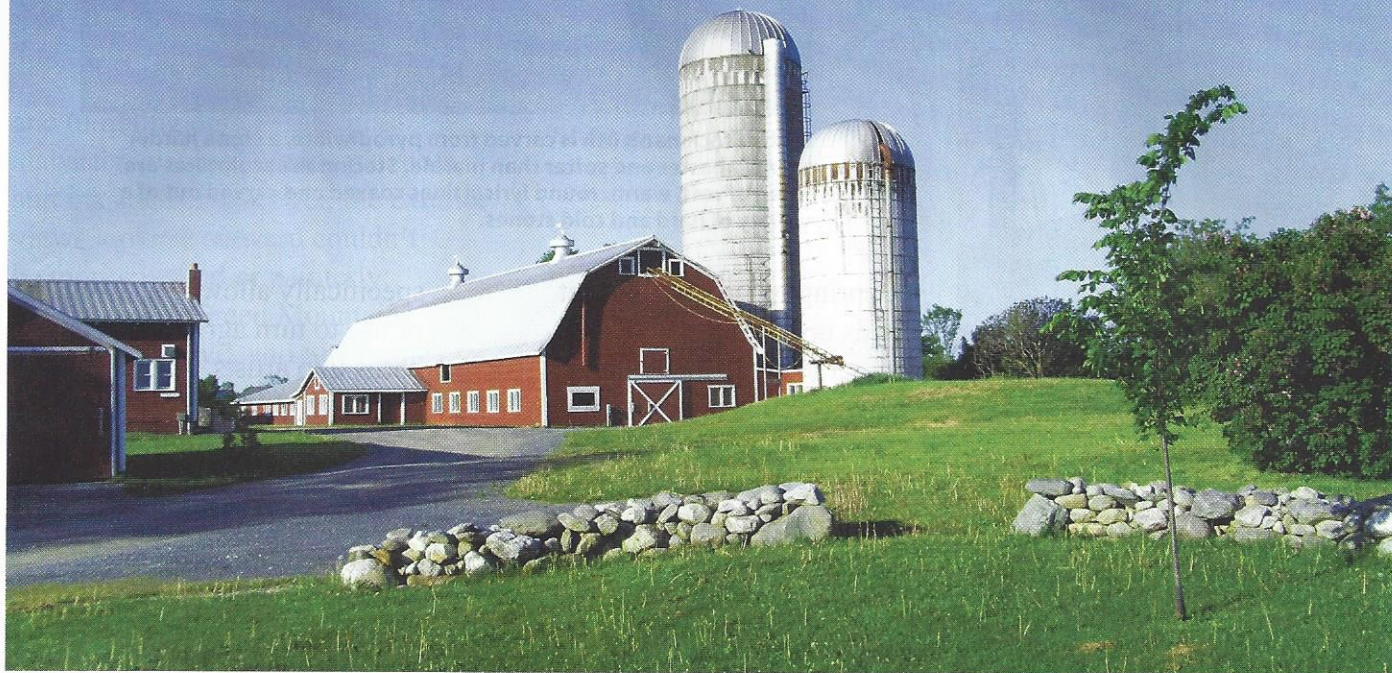


From Haybales to Hats

Vermont artists' lofts

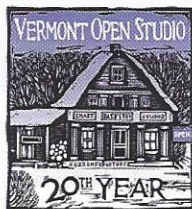
By Lin Stone



“The Vermont Crafts Council Open Studios weekend on May 26 and 27 provides an educational opportunity for the public to visit and support our artists’ studios.”

—Kathy Stockman, owner of Shelburne Pond Studios

Vermont Crafts Council
Open Studio Weekend
Memorial Day Weekend
May 26-27



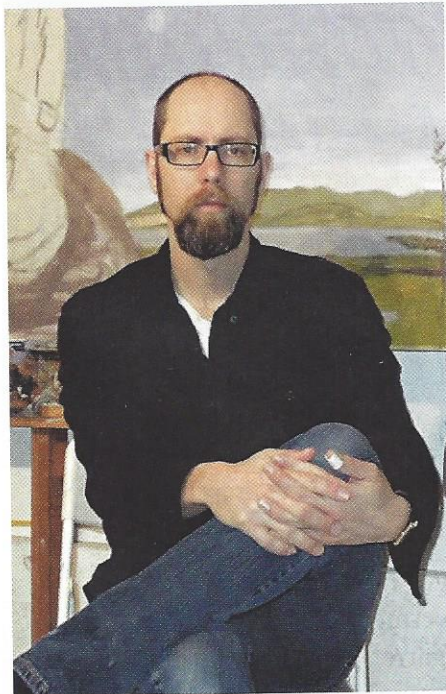
If you are not lucky enough to be in Vermont right now, you might find artists’ studios in steel gray city garrets, third floor lofts, and repurposed brick warehouses. But that view wouldn’t be necessary in the Green Mountain state. Here you can find artists’ studios that are as farm-fed and pastoral as its contented black and white cows.

This Memorial Day weekend Vermont artists open their studio doors to visitors in the Vermont Craft Council’s twice-yearly Open Studio event. Shelburne Pond Studios offers a perfectly pastoral case-in-point as this quintessential big red dairy barn has been renovated to house 16 artist studios where heifers once stood.

It’s a short drive from Dorset Street in Burlington to Shelburne’s winding Pond Road, and just as Shelburne Pond peeps into sight,



Kathy Stockman's fish is carved from pyrophyllite, a stone harder than alabaster and softer than marble. Stockman's sculptures are often of soft, warm, round lyrical lines coaxed and carved out of a variety of hard and cold stones.



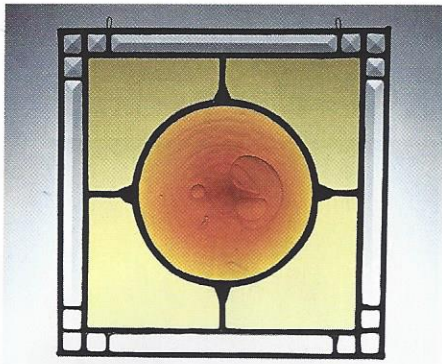
Painters and husband and wife team Stephanie Bush and Dana Dale Lee share a large sunny space at Shelburne Pond Studios. Bush is a Montreal native with an extensive and international exhibition record. Her recent work explores hibernation and offers viewers a detailed and painterly peek into the shelters and mysterious nooks found in winter landscapes. Lee's paintings also are of mysterious landscapes, but his are filled with haunting figures and otherworldly explorations.

a spring green grass carpet rolls up the hill across the street to reach the doors of an enormous big red wooden farm barn, home to Kathy Stockman's repurposed new studios. Stone and steel sculptures sprout from the landscape, scattered across the hill as if in an orchard. According to Stockman and her husband Rad Romeyn, it was either a wonderful fluke or the plan of visionaries that Shelburne's zoning laws

specifically allowed a change of use to turn agricultural barns into artists' studios. The couple couldn't be happier. Shelburne Pond Studios offers working artists a nurturing, beautiful, affordable community in which to develop their art and grow. The meticulously cleaned and renovated space has turned stalls into an assortment of sixteen bright studios with warm south and western light spilling through windows



Jude Mulle is a milliner making vintage-inspired hats and bridal headpieces. She forms her hats in straw, felt, and other fabrics using fine silks and velvets as well as antique beads and flowers, to make bands and embellishments for her contemporary-nostalgic chapeaus.

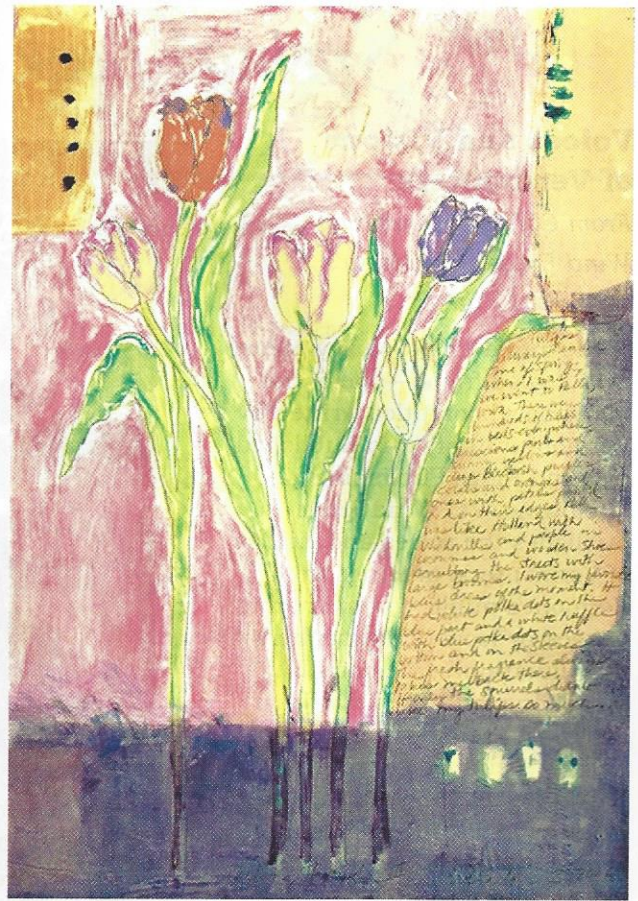


Ruth Murphy is an artist who hand bevels and creates lead-free stained glass pieces. Shown is a piece entitled "Amber Moon."

and tumbling onto easels, glass, alabaster, brushes, books, gluepots, and inkstands. Moreover, the exterior views looking outward couldn't be more inspired or painterly: Adirondacks, Green Mountains, Mount Mansfield, and Shelburne Pond. In addition, the aforementioned "orchard" is a growing year-round outdoor sculpture exhibit with eight sculptures by seven Vermont sculptors.

This spring the Vermont Crafts Councils' Open Studio weekend is held throughout the entire state on Memorial Day weekend, May 26-27. Wherever the location – barn on a dirt road or bustling streets and city loft – an artist's studio is an exciting and informative place to visit because you can see how the artist creates his or her work. You can witness creative works in progress, experimental works, or the painter's favorite painting. It is also a unique experience because you have the opportunity to speak to the artist about the work and process directly.

So this weekend take a long a lazy drive and visit Vermont's treasure trove of talented artists and craftspeople. Indoors and out, ponds, barns, and studios, you are certain to be inspired.



Lyna-Lou Nordstrom is a painter who prints. Her monotype images are created by painting on surfaces such as plexiglass that are then hand pulled and run through an etching press, sometimes several times. Her work is rich in color, and although much is non-representational, a distillation of nature often emerges. Above is a piece entitled "Peeking Through."



Laurel Fulton paints the Vermont landscape in oil on birch plywood. The layered and boundless breadth of the area's rolling land- and sky-scape informs her painting. Limited edition prints of her paintings are also available. Shown is the work entitled "Rolled Bales below Camel's Hump."